

RANGEHOODS

Smeg are the experts, with some of the most advanced air extractors in the world. Speed and low noise are delivered in either the fully concealed, retractable, wallmount and island styles of rangehood design. Special features include ENC — low Energy, low Noise, high Capacity.

ASC, automatic sensor control, where the rangehood actually detects vapours, including leaking gas, and automatically adjusts its speed to the appropriate level.

HC, home comfort, is the selection which will periodically have the rangehood turn itself on simply to refresh the room. Return home to a locked home that has already refreshed the air for your comfort.

DUCTED OR RE-CIRCULATING?

Ducting the filtered air direct to the atmosphere is preferred as the heat, humidity and odours are all removed from the kitchen.

If it is impossible to duct the rangehood to the outside, recirculation is available with most rangehoods. The filtered, cleaner air is now recirculated to the kitchen, as is the heat and odours. The odour effect can be diminished by the insertion of activated charcoal filters above the metal grease filter and before the motor(s). Charcoal filters are not to be washed and are replaceable.

POWER

Domestic rangehoods generally require between 250 and 500 cubic metres of air movement per hour net to cover average cooking needs, including the occasional vigorous style, such as stir frying. All the rangehoods on the following pages cover this as a minimum and most have large reserves of power for high extraction rates when the need arises. The rangehood maximum net air movement rates on the pages ahead vary from 280 cubic metres an hour net to 1600 cubic metres an hour net.

Gross air movement is the amount of air the rangehood can draw into its motor(s). The air drawn is naturally going to meet obstructions such as the motor itself and its impellor systems, filters and design deflections. Net air movement represents the actual, that is, true air movement on exiting the rangehood. Net air movement, therefore, is the actual work done.

Smeg's quoted air movement figures are accurate and documentation for all quoted figures are available on request.

K99955



K9995 PORSCHE

90

fascia	aluminium compound in four choices: black, blue, red or silver
trimming	silverfrost aluminium compound
installation	wall mount
width	900 mm
depth	500 mm
height	1,440 mm maximum
capacity	1300 m ³ /hr gross, 1000 m ³ /hr net
motor	370 watt centrifugal, twin impellers double-sided air uptake
noise rating	39 - 59 dBA
extraction	direct duct to atmosphere or recirculate 150 mm diameter ducting required
extension chimney	supplied 270–450 mm black two-piece telescopic chimney for optional use in the direct ducting mode
controls	four buttons and LED screen HC - Home Comfort selection
illumination	four 20 watt halogen globes separate soft-touch electronic button
speeds	four, ON/OFF + progressive speed
delay stop	five-minute delay stop for fan and lights
cleaning prompt	30-hour prompt to inspect grease filters
filtration	3 s/steel and aluminium 4-ply grease filters (removable and washable)



K99955BL



K99955BK



K99955R

HOME COMFORT

If the rangehood is dormant or the kitchen or house is unoccupied for extended periods, the rangehood will automatically turn itself on to the lowest speed for ten minutes in the hour to simply refresh the ambient air in the kitchen and immediate environs. This feature can be deselected at the touch of a button.

K181V60 K181V70



These rangehoods can be extracted direct to atmosphere or recirculated to kitchen. 150/125 mm diameter ducting adaptor is supplied

ducting required (not supplied):

- direct duct (150 mm diameter ducting required)
- recirculate (125 mm diameter ducting required)

K181V

60 70

- finish satin stainless steel with black glass fascia
- installation wall mount
- width 600 mm or 700 mm
- depth 496 mm
- *max height 1,000 mm (direct), 1,190 mm (recirculated)
- capacity 767 m³/hr gross, 590 m³/hr net
- motor 190 watt centrifugal, twin impellers
- double-sided air uptake
- noise rating 29 - 50 dBA
- illumination two 20 watt halogen globes, separate on/off
- speeds 3 (separate buttons)
- filtration 2 s/steel and aluminium 4-ply grease filters (removable and washable)
- optional activated charcoal filter cartridge (08999802)

3188/60 3188/70



K7099 ENC

60 70

- finish satin stainless steel
- installation wall mount
- width 600 mm or 700 mm
- depth 500 mm
- *max height 1,050 mm (direct), 1,240 mm (recirculated)
- capacity 1,300 m³/hr gross, 1,000 m³/hr net
- motor 400 watt centrifugal, twin impellers
- double-sided air uptake
- noise rating 23 - 65 dBA
- illumination twin halogen, dim control
- speeds 11 (digital LED, 5-minute delay stop)
- filtration 2 s/steel and aluminium 4-ply grease filters (removable and washable)
- cleaning prompt 30-hour grease filter cleaning prompt
120-hour charcoal filter check prompt
- optional activated charcoal filter cartridge (08999802)

3121/60 3121/70



K5020

60 70

- finish satin stainless steel
- installation wall mount
- width 600 mm or 700 mm
- depth 500 mm
- *max height 1,010 mm (direct), 1,200 mm (recirculated)
- capacity 975 m³/hr gross, 750 m³/hr net
- motor 250 watt centrifugal, twin impellers
- double-sided air uptake
- noise rating 40 - 59 dBA
- illumination twin halogen
- speeds 4
- filtration 2 s/steel and aluminium 4-ply grease filters (removable and washable)
- cleaning prompt 30-hour grease filter cleaning prompt
120-hour charcoal filter check prompt
- optional activated charcoal filter cartridge (08999802)

These rangehoods can be extracted direct to atmosphere or recirculated to kitchen. 150/125 mm diameter ducting adaptor is supplied

	<i>ducting required (not supplied):</i>
direct duct	(150 mm diameter ducting required)
recirculate	(125 mm diameter ducting required)

K181V**90**

finish	satin stainless steel with black glass fascia
installation	wall mount
width	900 mm
depth	496 mm
*max height	1,020 mm (direct), 1,190 mm (recirculated)
capacity	767 m ³ /hr gross, 590 m ³ /hr net
motor	190 watt centrifugal, twin impellers
	double-sided air uptake
noise rating	29 - 50 dBA
illumination	two 20 watt halogen globes, separate on/off
speeds	3 (separate buttons)
filtration	3 s/steel and aluminium 4-ply grease filters (removable and washable)
optional	activated charcoal filter cartridge (08999802)



K181V90

K7099 ENC**90**

finish	satin stainless steel
installation	wall mount
width	900 mm
depth	500 mm
*max height	1,050 mm (direct), 1,240 mm (recirculated)
capacity	1,300 m ³ /hr gross, 1,000 m ³ /hr net
motor	400 watt centrifugal, twin impellers
	double-sided air uptake
noise rating	23 - 65 dBA
illumination	twin halogen, dim control
speeds	11 (digital LED, 5-minute delay stop)
filtration	3 s/steel and aluminium 4-ply grease filters (removable and washable)
cleaning prompt	30-hour grease filter cleaning prompt
	120-hour charcoal filter check prompt
optional	activated charcoal filter cartridge (08999802)



3188/90

K9888**90**

finish	satin stainless steel
installation	wall mount
width	900 mm
depth	500 mm
*max height	1,015 mm (direct), 1,200 mm (recirculated)
capacity	992 m ³ /hr gross, 763 m ³ /hr net
motor	250 watt centrifugal, twin impellers
	double-sided air uptake
noise rating	40 - 59 dBA
illumination	two 20 watt halogen globes, separate on/off
	900 mm blue strip night light, separate on/off
speeds	4 (progressive up/down buttons)
filtration	3 s/steel and aluminium 4-ply grease filters (removable and washable)
cleaning prompt	30-hour grease filter cleaning prompt
	120-hour charcoal filter check prompt
optional	activated charcoal filter cartridge (08999802)



23401

* when direct ducting, the maximum height can be the same as recirculation height though the recirculation side vents will be visible.



3191



3127



K9399R

ENC

Low Energy, low Noise, high Capacity.

These are very real issues to consumers. Lower energy consumption, lower noise levels and greater air capacities are now achieved in a select group of new Smeg rangehoods.

K9288 ENC - retractable visor 90

finish	satin stainless steel, retractable crystal glass visor
installation	wall mount
width	900 mm
depth	330 - 480 mm
*max height	880 mm (direct), 1,065 mm (recirculated)
capacity	1,300 m ³ /hr gross, 1,000 m ³ /hr net
motor	400 watt centrifugal, twin impellers double-sided air uptake
noise rating	23 - 65 dBA
illumination	two 20 watt halogen globes, separate on/off
speeds	6 (1, 2, 3, 4, intense, super intense - two buttons)
filtration	2 s/steel and aluminium 4-ply grease filters (removable and washable)
cleaning prompt	30-hour grease filter cleaning prompt 120-hour charcoal filter check prompt
optional	activated charcoal filter cartridge (08999802)

K8399 ENC 90

finish	satin stainless steel with crystal glass visor
installation	wall mount
width	900 mm
depth	550 mm
*max height	995 mm (direct), 1,172 mm (recirculated)
capacity	1,300 m ³ /hr gross, 1,000 m ³ /hr net
motor	400 watt centrifugal, twin impellers double-sided air uptake
noise rating	25 - 59 dBA
illumination	twin halogen, dim control
speeds	12 (5-minute delay stop)
filtration	2 s/steel and aluminium 4-ply grease filters (removable and washable)
cleaning prompt	30-hour grease filter cleaning prompt 120-hour charcoal filter check prompt
optional	activated charcoal filter cartridge (08999802)

K9399R 90

finish	satin stainless steel & brown crystal glass
installation	wall mount
width	900 mm
depth	450 mm
*max height	1,451 mm (direct), 1,629 mm (recirculated)
capacity	992 m ³ /hr gross, 763 m ³ /hr net
motor	250 watt centrifugal, twin impellers double-sided air uptake
noise rating	40 - 59 dBA
illumination	two 20 watt halogen globes, separate on/off
speeds	4 (progressive up/down buttons)
filtration	1 s/steel and aluminium 4-ply grease filters (removable and washable)
cleaning prompt	30-hour grease filter cleaning prompt 120-hour charcoal filter check prompt
optional	activated charcoal filter cartridge (08999802)

All rangehoods shown here can be extracted direct to atmosphere or recirculated to kitchen. 150/125 mm diameter ducting adaptor is supplied

	<i>ducting required (not supplied):</i>
direct duct	(150 mm diameter ducting required)
recirculate	(125 mm diameter ducting required)

K7588 ASC**90**

finish	satin stainless steel & crystal glass
asc	sensor control (separate button & LED)
installation	wall mount
width	900 mm
depth	496 mm
*max height	1,055 mm (direct), 1,235 mm (recirculated)
capacity	975 m ³ /hr gross, 750 m ³ /hr net
motor	250 watt centrifugal, twin impellers double-sided air uptake
noise rating	40 - 59 dBA
illumination	two 20 watt halogen globes, separate on/off
speeds	4 (separate buttons, 5-minute delay stop)
filtration	1 s/steel and aluminium 4-ply grease filter (removable and washable)
cleaning prompt	30-hour grease filter cleaning prompt 120-hour charcoal filter check prompt
optional	activated charcoal filter cartridge (08999802)



K7588ASC

K9188**90**

finish	satin stainless steel & crystal glass
installation	wall mount
width	900 mm
depth	500 mm
*max height	1,156 mm (direct), 1,335 mm (recirculated)
capacity	1,032 m ³ /hr gross, 794 m ³ /hr net
motor	250 watt centrifugal, twin impellers double-sided air uptake
noise rating	35 - 58 dBA
illumination	two 20 watt halogen globes, separate on/off
speeds	4 (separate buttons, 5-minute delay stop)
filtration	1 s/steel and aluminium 4-ply grease filter (removable and washable)
cleaning prompt	30-hour grease filter cleaning prompt 120-hour charcoal filter check prompt
optional	activated charcoal filter cartridge (08999802)



23402

K9993 VTT**90**

finish	satin stainless steel & black crystal glass
installation	wall mount
width	900 mm
depth	520 mm
*max height	1,470 mm (direct), 1,650 mm (recirculated)
capacity	1,040 m ³ /hr gross, 800 m ³ /hr net
motor	250 watt centrifugal, twin impellers double-sided air uptake
noise rating	40 - 59 dBA
illumination	two 40 watt halogen globes, separate on/off
speeds	4 (touch zones, 5-minute delay stop)
filtration	2 s/steel and aluminium 4-ply grease filters (removable and washable) above 2 removable black glass peripheral filters
cleaning prompt	30-hour grease filter cleaning prompt 120-hour charcoal filter check prompt
optional	activated charcoal filter cartridge (0899902)



K9993VTT

* when direct ducting, the maximum height can be the same as recirculation height though the recirculation side vents will be visible.



K1288ASC

All rangehoods shown here (except the K24ER100) can be extracted direct to atmosphere or recirculated to kitchen. 150/125 mm diameter ducting adaptor is supplied.

ducting required (not supplied):
 direct duct (150 mm diameter ducting required)
 recirculate (125 mm diameter ducting required)

K1288 ASC

90

finish satin stainless steel and white glass
 asc sensor control (separate button & LED)
 installation wall mount
 width 900 mm
 depth 420 mm
 *max height 1,285 mm (direct), 1,465 mm (recirculated)
 capacity 975 m³/hr gross, 750 m³/hr net
 motor 250 watt centrifugal, twin impellers
 double-sided air uptake
 noise rating 40 - 59 dBA
 illumination two 20 watt halogen globes, separate on/off
 speeds 4 (progressive up/down buttons, 5-min delay stop)
 filtration 1 s/steel and aluminium 4-ply grease filters (removable and washable)
 above hinged centre glass deflector
 cleaning prompt 30-hour grease filter cleaning prompt
 120-hour charcoal filter check prompt
 optional activated charcoal filter cartridge (08999802)



K280

K280 WITH REMOTE CONTROL

90

finish satin stainless steel and crystal glass
 installation wall mount
 width 900 mm
 depth 486 mm
 *max height 1,126 mm (direct), 1,245 mm (recirculated)
 capacity 1,170 m³/hr gross, 900 m³/hr net
 motor 370 watt centrifugal, twin impellers
 double-sided air uptake
 noise rating 42 - 62 dBA
 illumination three 20 watt halogen globes, two light levels
 speeds 4 (5-minute delay stop)
 filtration 2 s/steel and aluminium 4-ply grease filters (removable and washable)
 cleaning prompt 30-hour grease filter cleaning prompt
 120-hour charcoal filter check prompt
 optional activated charcoal filter cartridge (08999802)



K9998

K9998 FPX

90

finish satin stainless steel
 installation wall mount
 width 900 mm
 depth 450 mm
 *max height 1,145 mm (direct), 1,325 mm (recirculated)
 capacity 910 m³/hr gross, 700 m³/hr net
 motor 250 watt centrifugal, twin impellers
 double-sided air uptake
 noise rating 40 - 56 dBA
 illumination two 20 watt halogen globes, separate on/off
 900 mm blue strip night light, separate on/off
 speeds 4 (4 buttons, 5-minute delay stop)
 filtration 2 s/steel and aluminium 4-ply grease filters (removable and washable)
 above hinged stainless steel peripheral filter
 cleaning prompt 30-hour grease filter cleaning prompt
 120-hour charcoal filter check prompt
 optional activated charcoal filter cartridge (08999802)

K28

90

finish	satin stainless steel
installation	wall mount
width	900 mm
depth	500 mm
*max height	1,140 mm
capacity	1,036 m ³ /hr gross, 797 m ³ /hr net
motor	240 watt centrifugal, twin impellers double-sided air uptake
noise rating	44 - 60 dBA
illumination	two 20 watt halogen globes, separate on/off
speeds	3 (separate buttons)
filtration	3 s/steel and aluminium 4-ply grease filters (removable and washable)
optional	activated charcoal filter pair (08999801) telescopic flue (2955) to increase height to 1,700 mm
recirculation	no ducting required, a diverter plate is supplied
direct ducting	150 mm diameter ducting required



3146

K24

60 90

identical to the K28 above, with smaller capacity and incandescent lighting:

capacity	683 m ³ /hr gross, 510 m ³ /hr net
illumination	two incandescent 40 watt globes
available in both white and stainless steel, in 60cm and 90cm widths:	
white	60cm width (2962), 90cm width (2964)
stainless steel	60cm width (2965), 90cm width (2966/1)



3106

K39

90

finish	satin stainless steel with utensil rail
installation	wall mount
width	900 mm
depth	500 mm
*max height	1,158 mm (direct), 1,268 mm (recirculated)
capacity	975 m ³ /hr gross, 750 m ³ /hr net
motor	240 watt centrifugal, twin impellers double-sided air uptake
noise rating	39 - 64 dBA
illumination	two 20 watt halogen globes, separate on/off
speeds	3 (separate buttons)
filtration	3 s/steel and aluminium 4-ply grease filters (removable and washable)
cleaning prompt	30-hour grease filter cleaning prompt 120-hour charcoal filter check prompt
optional	activated charcoal filter pair (D210CF2) telescopic flue (2833) to increase height to 1,738 mm



K24ER100

K24ER100

100

finish	satin stainless steel
installation	wall mount
width	1,000 mm
depth	500 mm
max height	1,140 mm
capacity	1,018 m ³ /hr gross, 783 m ³ /hr net
motor	240 watt centrifugal, twin impellers double-sided air uptake
noise rating	44 - 60 dBA
illumination	two 20 watt halogen globes, separate on/off
speeds	4 (4 buttons)
filtration	3 s/steel and aluminium 4-ply grease filters (removable and washable)
optional	activated charcoal filter pair (0899901) 800 mm extension (9955) to replace upper flue
recirculation	no ducting required, a diverter plate is supplied
direct ducting	150 mm diameter ducting required

* when direct ducting, the maximum height can be the same as recirculation height though the recirculation side vents will be visible.

The rangehoods shown here can be extracted direct to atmosphere or recirculated to kitchen. 150/125 mm diameter ducting adaptor is supplied.

ducting required (not supplied):

direct duct (150 mm diameter ducting required)
recirculate (125 mm diameter ducting required)

3188/120



K7099 ENC

120

finish	satin stainless steel
installation	wall mount
width	1,200 mm
depth	500 mm
*max height	1,050 mm (direct), 1,240 mm (recirculated)
capacity	1,300 m ³ /hr gross, 1,000 m ³ /hr net
motor	400 watt centrifugal, twin impellers double-sided air uptake
noise rating	23 - 65 dBA
illumination	two 20 watt halogen globes, separate on/off
speeds	11 (5-minute delay stop)
filtration	4 s/steel and aluminium 4-ply grease filters (removable and washable)
cleaning prompt	30-hour grease filter cleaning prompt 120-hour charcoal filter check prompt
optional	activated charcoal filter cartridge (0899902)

3121/120



K5020

120

finish	satin stainless steel
installation	wall mount
width	1,200 mm
depth	500 mm
*max height	1,010 mm (direct), 1,200 mm (recirculated)
capacity	975 m ³ /hr gross, 750 m ³ /hr net
motor	250 watt centrifugal, twin impellers double-sided air uptake
noise rating	40 - 59 dBA
illumination	two 20 watt halogen globes, separate on/off
speeds	4 (5-minute delay stop)
filtration	4 s/steel and aluminium 4-ply grease filters (removable and washable)
cleaning prompt	30-hour grease filter cleaning prompt 120-hour charcoal filter check prompt
optional	activated charcoal filter cartridge (0899902)

KASC505

40

finish	satin stainless steel
installation	wall mount
diameter	400 mm
max height	890 mm
capacity	962 m ³ /hr gross, 740 m ³ /hr net
motor	250 watt centrifugal, twin impellers
	double-sided air uptake
noise rating	36 - 54 dBA
illumination	two 20 watt halogen globes, separate on/off
speeds	3 (separate buttons, 5-minute delay stop)
filtration	1 s/steel and aluminium 4-ply grease filters (removable and washable)
cleaning prompt	30-hour grease filter cleaning prompt 120-hour charcoal filter check prompt
optional	activated charcoal filter cartridge (0899902)



KASC505

K508

60

finish	satin stainless steel
installation	wall mount
width	900 mm
depth	420 mm
*max height	1,300 mm (direct), 1,360 mm (recirculated)
capacity	949 m ³ /hr gross, 730 m ³ /hr net
motor	250 watt centrifugal, twin impellers
	double-sided air uptake
noise rating	39 - 64 dBA
illumination	two 20 watt halogen globes, separate on/off
speeds	4 (5-minute delay stop)
filtration	1 s/steel and aluminium 4-ply grease filters (removable and washable)
cleaning prompt	30-hour grease filter cleaning prompt 120-hour charcoal filter check prompt
optional	activated charcoal filter cartridge (0899902)



23407

* when direct ducting, the maximum height can be the same as recirculation height though the recirculation side vents will be visible.

150cm - K7088D150 180cm - K7088D180



K7088D

150 180

This double rangehood is also available in island application:

150 cm	IS7088D150
180 cm	IS7088D180
*max height	986 mm (direct), 1,091 mm (recirculated)
depth	595 mm
ASC	fitted

The rangehoods shown here can be extracted direct to atmosphere or recirculated to kitchen. 150/125 mm diameter ducting adaptor is supplied.

	<i>ducting required (not supplied):</i>
direct duct	(150 mm diameter ducting required)
recirculate	(125 mm diameter ducting required)



23406

two systems in one structure, use simultaneously or singularly

finish	satin stainless steel
installation	wall mount
width	1,500 mm or 1,800 mm
depth	500 mm
*max height	1,050 mm (direct), 1,240 mm (recirculated)

each system:

ASC	automatic sensor control selection
capacity	2 x 975 m ³ /hr gross, 2 x 750 m ³ /hr net
motor	2 x 240 watt centrifugal, twin impellers on each double-sided air uptake on each
noise rating	23 - 65 dBA
illumination	two 20 watt halogen globes, separate on/off
speeds	4 (5-minute delay stop selection)
filtration	4 s/steel and aluminium 4-ply grease filters (removable and washable)
cleaning prompt	30-hour grease filter cleaning prompt 120-hour charcoal filter check prompt
optional	activated charcoal filter cartridge (0899902)

IS505

40

finish	satin stainless steel
installation	island - suspended from ceiling or bulkhead
diameter	400 mm
*max height	1,070 mm (direct), 1,170 mm (recirculated)
capacity	930 m ³ /hr gross, 715 m ³ /hr net
motor	250 watt centrifugal, twin impellers double-sided air uptake
noise rating	36 - 54 dBA
illumination	two 20 watt halogen globes, separate on/off
speeds	4 (5-minute delay stop)
filtration	1 s/steel and aluminium 4-ply grease filters (removable and washable)
cleaning prompt	30-hour grease filter cleaning prompt 120-hour charcoal filter check prompt
optional	activated charcoal filter cartridge (0899568)

* when direct ducting, the maximum height can be the same as recirculation height though the recirculation side vents will be visible.

IS7099 ENC

90 120

finish	satin stainless steel
installation	island - suspended from ceiling or bulkhead
width	900 mm
depth	600 mm
*max height	815 mm (direct), 925 mm (recirculated)
capacity	1,300 m ³ /hr gross, 1,000 m ³ /hr net
motor	400 watt centrifugal, twin impellers double-sided air uptake
noise rating	23 - 65 dBA
illumination	four halogen lights, dim control
speeds	10 (5-minute delay stop)
filtration	3 s/steel and aluminium 4-ply grease filters (removable and washable)
cleaning prompt	30-hour grease filter cleaning prompt 120-hour charcoal filter check prompt
optional	activated charcoal filter cartridge (0899902)



90cm - 23404 120cm - 23405

IS7599 ENC

90

finish	satin stainless steel and crystal glass
installation	island - suspended from ceiling or bulkhead
width	900 mm
depth	600 mm
*max height	805 mm (direct), 915 mm (recirculated)
capacity	1,300 m ³ /hr gross, 1,000 m ³ /hr net
motor	400 watt centrifugal, twin impellers double-sided air uptake
noise rating	23 - 65 dBA
illumination	four halogen lights, dim control
speeds	10 (5-minute delay stop)
filtration	1 s/steel and aluminium 4-ply grease filters (removable and washable)
cleaning prompt	30-hour grease filter cleaning prompt 120-hour charcoal filter check prompt
optional	activated charcoal filter cartridge (0899902)



3129

IS280 WITH REMOTE CONTROL

90

finish	satin stainless steel and crystal glass
installation	island - suspended from ceiling or bulkhead
width	900 mm
depth	712 mm
max height	1,241 mm
capacity	1,170 m ³ /hr gross, 900 m ³ /hr net
motor	370 watt centrifugal, twin impellers double-sided air uptake
noise rating	42 - 62 dBA
illumination	three 20 watt halogen globes, two light levels
speeds	4 (separate buttons, 5-minute delay stop)
filtration	4 s/steel and aluminium 4-ply grease filters (removable and washable)
cleaning prompt	30-hour grease filter cleaning prompt 120-hour charcoal filter check prompt
optional	activated charcoal filter cartridge (08999802)



IS280

PASC7801FPX



PASC7801 FPX 72

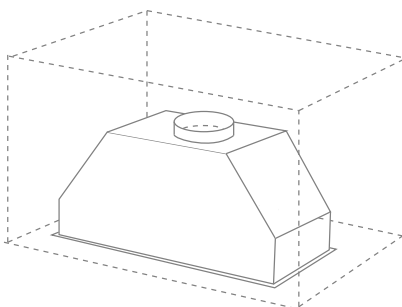
finish	satin stainless steel
installation	concealed canopy
width	718 mm
depth	284 mm
height	284 mm
ASC	automatic sensor control selection
capacity	910 m ³ /hr gross, 700 m ³ /hr net
motor	250 watt centrifugal, twin impellers
	double-sided air uptake
noise rating	39 - 57 dBA
illumination	two 20 watt halogen globes, separate on/off
speeds	4 (5-minute delay stop selection)
filtration	1 s/steel and aluminium 4-ply grease filters (removable and washable)
	above stainless steel hinged peripheral filter
cleaning prompt	30-hour grease filter cleaning prompt
	120-hour charcoal filter check prompt
optional	activated charcoal filter pair (0899801)

PASC5801FPX



PASC5801 FPX 54

The PASC5801 FPX is 54cm wide. All other specifications are identical to the PASC7801 FPX (above).



These rangehoods are concealed canopies to be built into overhead cabinetry, whether it be wall, corner or island design.



3125

CK2000

76

- finish satin stainless steel
- installation concealed canopy
- width 760 mm
- depth 400 mm
- max height 357 mm
- capacity 2,080 m³/hr gross, 1,600 m³/hr net
- motor 2 x 400 watt centrifugal, twin impellers on each double-sided air uptake on each
- noise rating 44 - 59 dBA
- illumination two 20 watt halogen globes
- speeds 4 (separate buttons, 5-minute delay stop selection)
- filtration 3 s/steel and aluminium 4-ply grease filters (removable and washable)
- cleaning prompt 30-hour grease filter cleaning prompt
- ducting 200mm ducting material required



CI2000-76

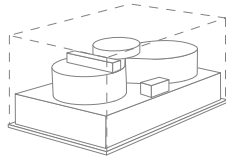
CI2000 ISLAND

76

- finish satin stainless steel
- installation island concealed canopy
- depth 460 mm with additional twin lights
- All other specifications are identical to the CK2000 (above).

The rangehoods on these pages can be extracted direct to atmosphere or recirculated to kitchen. Ducting is required for both direct ducting to atmosphere and recirculation to the kitchen.

P52/2 - 2582 P70/2 - 2584



P52/2 & P70/2

52 72

- finish satin stainless steel
- installation concealed canopy
- width 520 mm or 700 mm
- depth 285 mm
- max height 201 mm
- ducting required 125 mm
- capacity 430 m³/hr gross, 380 m³/hr net
- motor 2 x 100 watt centrifugal, twin impellers
- noise rating 48 - 55 dBA
- illumination two 20 watt halogen globes
- speeds 3 (slide control)
- 52cm P52/2 filtration 1 s/steel and aluminium 4-ply grease filter
- 70cm P70/2 filtration 2 s/steel and aluminium 4-ply grease filters (removable and washable)
- optional activated charcoal filter pair (03300416)

60cm - 3097/3 90cm - 23408



SA480T

60 90

- finish silver with stainless steel fascia
- installation retractable
- width 600 mm or 900 mm
- depth 300 mm
- max height 170 mm
- ducting required 125 mm
- capacity 370 m³/hr gross, 280 m³/hr net
- motor 2 x 100 watt centrifugal, twin impellers on each double-sided air uptake on each
- noise rating 48 - 58 dBA
- illumination twin 40 watt incandescent lights
- speeds 3 (can be preset)
- 60cm filtration 1 s/steel and aluminium 4-ply grease filters
- 90cm filtration 2 s/steel and aluminium 4-ply grease filters (removable and washable)
- optional 60cm - activated charcoal filter (CF3061)
90cm - activated charcoal filter (CF3062)

SA490TX60



SA490T

60

- finish silver with stainless steel fascia
- installation retractable
- width 600 mm
- depth 300 mm
- max height 170 mm
- ducting required 125 mm
- capacity 370 m³/hr gross, 280 m³/hr net
- motor 2 x 100 watt centrifugal, twin impellers
- noise rating 48 - 58 dBA
- illumination two 20 watt halogen globes
- speeds 3 (can be preset)
- filtration 1 s/steel and aluminium 4-ply grease filters (removable and washable)
- optional activated charcoal filter pair (08999875)

SA550 DELUXE SLIM JIM

60 90

finish	satin stainless steel
installation	retractable
width	600 mm or 900 mm
depth	320 mm
max height	290 mm
ducting required	150 mm
capacity	1,040 m ³ /hr gross, 800 m ³ /hr net
motor	240 watt centrifugal, twin impellers double-sided air uptake
noise rating	41 - 58 dBA
illumination	two 20 watt halogen globes
speeds	4 (can be preset, 5-minute delay stop selection)
60cm filtration	2 s/steel and aluminium 4-ply grease filters
90cm filtration	4 s/steel and aluminium 4-ply grease filters (removable and washable)
cleaning prompt	30-hour grease filter cleaning prompt 120-hour charcoal filter check prompt
optional	activated charcoal filter pair (0899801)

60cm - 2703
90cm - 2709

SA590TX SUPER SLIM JIM

60 90

ENC	fitted
finish	satin stainless steel
installation	retractable
width	600 mm or 900 mm
depth	320 mm
max height	290 mm
ducting required	150 mm
capacity	1,300 m ³ /hr gross, 1,000 m ³ /hr net
motor	400 watt centrifugal, twin impellers double-sided air uptake
noise rating	25 - 65 dBA
illumination	two 20 watt halogen globes, dim control
speeds	6 (can be preset, 5-minute delay stop selection)
60cm filtration	2 s/steel and aluminium 4-ply grease filters
90cm filtration	4 s/steel and aluminium 4-ply grease filters (removable and washable)
cleaning prompt	30-hour grease filter cleaning prompt 120-hour charcoal filter check prompt
optional	activated charcoal filter pair (0899801)

60cm - 2703
90cm - 2709

SST SECRET TELESCOPIC HOOD

60 90

finish	all silver
installation	retractable cantilevered rail disappears behind cabinet when retracted
width	600 mm or 900 mm
depth	280 mm
max height	200 mm
ducting required	125 mm
capacity	370 m ³ /hr gross, 280 m ³ /hr net
motor	2 x 100 watt centrifugal, twin impellers
noise rating	48 - 58 dBA
illumination	two 20 watt halogen globes
speeds	3 (can be preset)
60cm filtration	1 s/steel and aluminium 4-ply grease filters (removable and washable)
90cm filtration	2 s/steel and aluminium 4-ply grease filters (removable and washable)
optional	60cm - activated charcoal filter (0899875) 90cm - activated charcoal filter (0899824)

60cm - 3040/3
90cm - 3048/3



VISIT A SMEG SHOWROOM



“To choose Smeg is to choose wisely,
and show a clever appreciation of the good things in life.”

A product must work at four levels:

1. It must perform the function for which it is designed and manufactured.
2. The product must perform this function over a sustainable period.
3. Its function(s) must be easily appreciated and it must never be cumbersome to maintain.
4. Finally, and by never any means least, the product must please aesthetically.

Smeg appliances are conceived, researched, developed and manufactured in their own plants. Very few brand names have this complete intellectual ownership of their products. Innovation, research and design are integral to everything that is Smeg.

Smeg, the word, is actually an acronym. In the company's formative years, the name was written as S.M.E.G. and, in separating this abbreviation, an interesting part of the company's history is revealed. Literally, S.M.E.G. represents Smalterie Metallurgiche Emilliane Guastalla. In English, this would translate as 'a metal enamelling factory in the village of Guastalla in the province of Emilia in northern Italy'.

Smeg has developed magnificently since those early days of being specialist enamellers. The headquarters, along with research and development, remains in Guastalla, while the major cooking appliance factory is eight kilometres away in a rural location outside the ancient village of San Girolamo, near Parma. Dishwashers and washing machines are manufactured at the new and expanding base in the town of Bonferraro in the Veneto region of the province of Verona. The sinks are all cast at the company's factory in the province of Chieti.

The original enamelling business was started by the Bertazzoni family and, to this day, Smeg remains in the ownership and under the guidance of Dr Roberto Bertazzoni. The Bertazzoni family and their close team of architects, industrial designers, artisans, engineers and employees, have maintained the passion for innovation, design and performance.

It was Dr Bertazzoni who, over 20 years ago, introduced cutting edge architectural aspects to the company's portfolio.

Smeg's very twentieth century renaissance has continued to blossom into the new millennium with now world-famous architects such as Guido Canali. His stand-alone surname has now dropped into the lexicon of students and aficionados of architecture, engineering and design.

The Canali influence has indisputably been the most recognisable over the last two decades, with his almost industrial treatment of a straight line and his no-nonsense high functionality to control knobs, clocks and accessories. The straight line, however, will have the most perfect rolled edge, a metal sheet will meet a plate of glass subtly and exactly. The simple classic analogue clock belies its full electronic programmability and the control knob is so faultlessly proportioned it begs to be touched to check its reality.

This school of Smeg design has never waned; it continues to expand, with new ovens, cooktops, dishwashers, and even sinks, maintaining a remarkable freshness. Canali-designed appliances have withstood fashion seasons for so long - perhaps this is the graduation to icon status.

Fresh design is always important. It not only offers a parallel aesthetic to what we know and love, it also revitalises the visual and tactile sensibilities to what is possible.

'Linear' is a new look by Smeg. The new contemporary Linear ovens and cooktops stun with unique design details and, collectively, offer a new architecture to kitchen appliances. Linear appliances showcase in many of the following pages.



freestyle

Smeg regards freestanders as very different to built-in appliances.
 Smeg freestanders stand unencumbered by adjacent cabinetry, as beautiful and practical pieces of furniture in their own right.

rangehoods

Smeg offers the most advanced air extractors in the world.
 ENC - Energy saving, Noise reduced and increased Capacity.
 ASC - Automatic Sensor Control detects vapours and automatically adjusts speed to the appropriate level.
 HC - Home Comfort periodically turns on to refresh the room.

orbital technology

Smeg have been designing and manufacturing dishwashers for as long as cooking appliances, with the highest design detail, quality of wash, water and energy efficiencies all above world class.
 Grease-cutting orbital wash system, polycarbonate plinths for noise reduction and carcass strength, rinse/hold and ultra-heavy duty programs - these are all world firsts.



direct flame

Smeg's latest advancement is the new PTSA burner assemblies that ensure a more efficient vertical flame with far less side flame wastage.
 For those who love gas cooking, this improvement will be instantly recognisable and enjoyed.

cool

Side-by-side or retro, frost-free and BSS Bacteria Suppression System - those are cool combinations.
 On the outside, it's all style, on the inside it's no maintenance frost-free and nano applied technology of the bacteria suppression system which can add weeks of shelf life to your stored food.

espression

Smeg is all about lifestyle, and nothing expresses lifestyle more than your own European café-style quality cappuccinos, lattes and espressos with the SCM1 coffee machine.
 Superb coffee making is true to Smeg's Italian heritage.



WHY SMEG?



advanced electronics

Smeg spearheads technological development with their new advanced electronics that are now visually easy to follow and adapt for special needs.

Advanced electronics offer automatic preheats, cooking temperatures, durations, recipe storage and perfect thermostat control for perfect cooking results.

ECO

When household circumstances dictate that peak demand for electricity will not allow too many electrical appliances or services (airconditioning, heating) to be run simultaneously, at least the Smeg oven can be selected to the ECO mode to reduce its energy consumption at any time and spread the total consumption over a longer duration.

healthy steam

Healthy vitamin retention or beautifully plump and perfectly browned roast dinners, Smeg steam does it all.

Smeg's steam range includes a dedicated steam-only oven, and a unique full-sized steam convection, fan forced multifunction oven which at any time is a dedicated steam oven, or a full-sized electric oven with all Smeg traditional cooking functions.



max cool doors

With underbench ovens within easy reach of toddlers, Smeg cool touch oven doors keep your children safe and your kitchen cool even at maximum operating temperatures.

Many Smeg ovens' maximum door temperature never exceeds 11°C above ambient room temperature. This precludes them from displaying the almost ubiquitous 'hot surface' sticker.

pyrolytic self-cleaning

For busy kitchens, the Smeg pyrolytic oven will thoroughly clean the oven's cavity by the simple selection of this special program.

For the equivalent of less than a dollar, this pyrolysis replaces oven cleaners, your labour and, more than likely, frustration.

telescopic side racks

Smeg's special telescopic GT123DX side racks allow the oven trays and shelves to be projected well forward (110%) into the air space above the opened door.

These racks also maintain the trays and shelves at a flat, stable position. Loading, unloading and repositioning of food and cooking pots and pans is now much safer and easier.

